

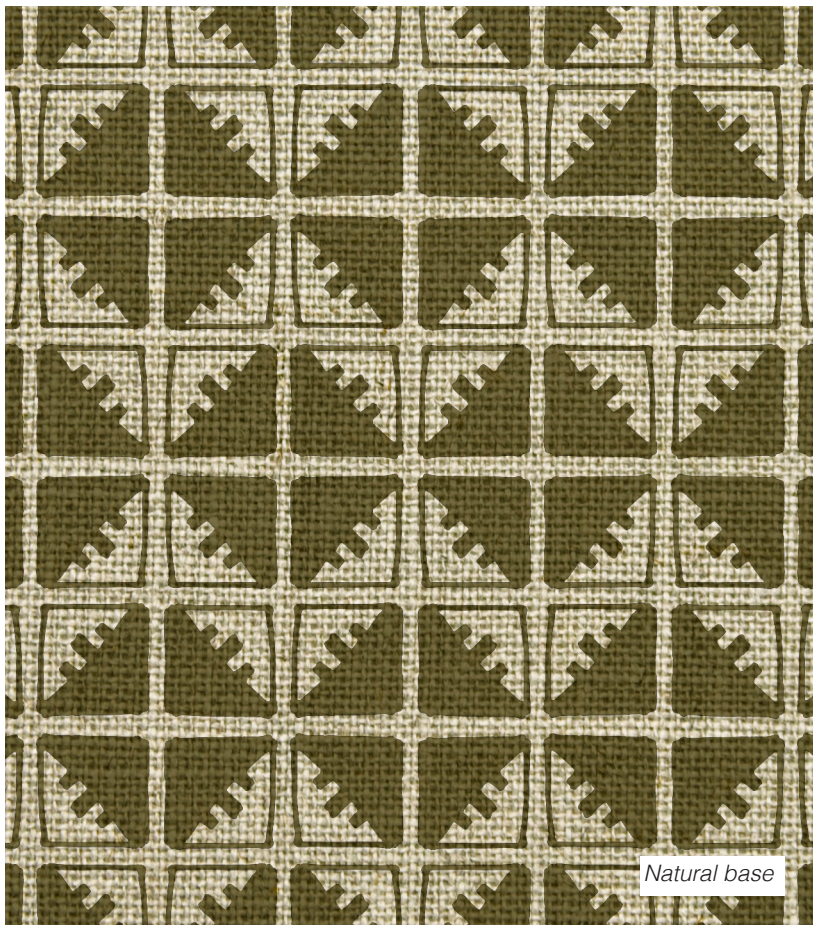
# SANGO

## Kale

---

PATTERN:	Ksar
COLOURWAY:	Kale
BASE COLOUR:	Oyster or Natural
COMPOSITION:	100% Linen
WIDTH:	1320mm / 52"
VERTICAL REPEAT:	68mm
CARE:	DRY CLEAN ONLY
USE:	Upholstery, curtains, blinds, cushions

For accurate colour and scale we recommend ordering a sample of fabric.



# MARCH &MAY