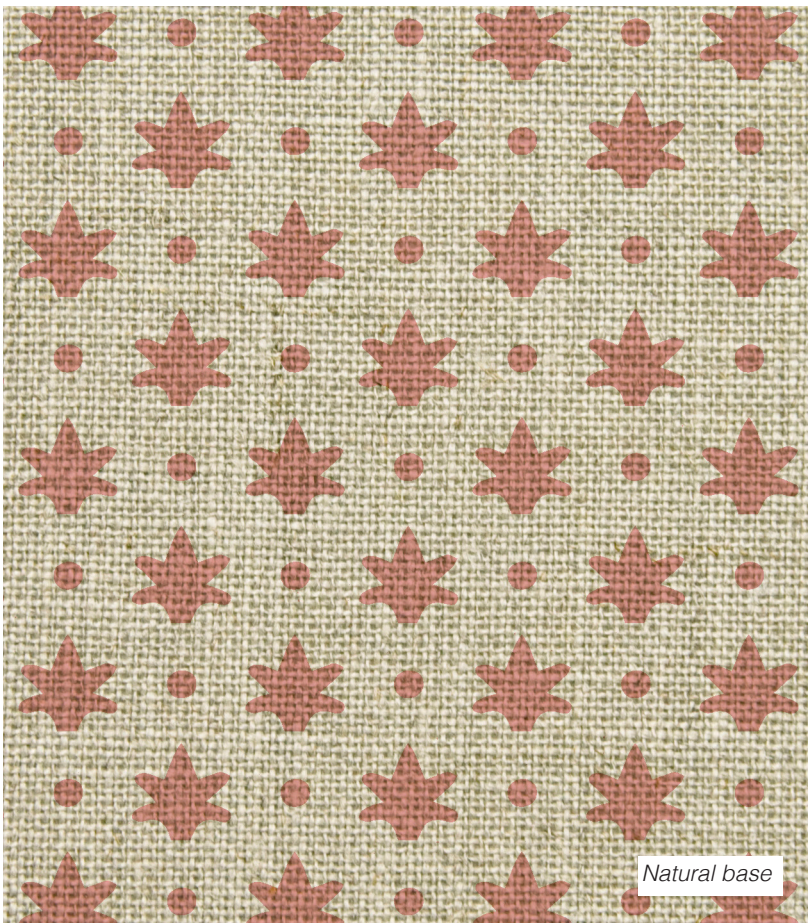


DAWRA Bloom

PATTERN:	Dawra
COLOURWAY:	Bloom
BASE COLOUR:	Oyster or Natural
COMPOSITION:	100% Linen
WIDTH:	1320mm / 52"
VERTICAL REPEAT:	30mm
CARE:	DRY CLEAN ONLY
USE:	Upholstery, curtains, blinds, cushions

For accurate colour and scale we recommend ordering a sample of fabric.



MARCH &MAY